

# Alpha-Pack Enterprise Co., Ltd.

**Address:** Unit 1406,Vanta Industrial  
Centre,21-23 Tai Ling Pai Road ,Kwai  
Chung, Hong Kong

**Tel.:**852-2416-1237

**Fax.:**852-2264-6540

**E-mail:** sale@alpha-pack.com.hk

**Website:** www.alpha-pack.com.hk



# Company Profile

Alpha-Pack Enterprise Limited was established in 1994 in Hong Kong. Alpha-Pack is a comprehensive enterprise that dedicated in packaging machinery in last 20 years; it combines R&D, production, marketing and service together.

Since the company has been founded, Alpha-Pack cooperated with many famous European packaging machinery manufacturers to make the packaging machinery for worldwide market. As the name in Chinese “欧华”, means we made the machine with European standard but in Chinese manufacturing cost. Thanks to the trust from all the business partners, customers and staffs, Alpha-Pack has been grown as one of the biggest packaging machinery manufacturing group in South China, with more than 80,000 m<sup>2</sup> manufacturing workshops in China and Europe, Alpha-Pack became the leading packaging manufacturer in China for the following categories of packaging machineries:

- Shrink packing machine
- Vertical Form Fill Seal and Flow Wrapper
- Premade pouch filling and sealing machine
- Filling, capping and labeling machine
- Vacuum Machine



LASER CUTTING MACHINE



數控折彎機 CNC BENDING MACHINE



CNC MANUFACTURING CENTER



數控車床 CNC LATHE



車間  
machine workshop



給袋機車間  
Doypack machine workshop



# Corporate Culture

- ◆ All our staffs will, as always, be pursuing a consistent concept that “we do better than you expected” to serve our domestic and worldwide customers.
- ◆ Grateful to customers trust and support, all Alpha-Pack members promise to develop the best products, provide the best service, and create the best brand with a very reasonable price. Create value and profit for our clients.
- ◆ We believe integrity and quality service are the best way to build up long term customer relationship.



# Alpha-Jet Coding Machine

## AP-E1H

### Parameters

Specification	<b>Controller:143.5*123*236mm(H*W*D)/5.65*4.84*9.3 inch</b>
Language	Chinese, English, Japanese, French, German, Spanish, Portuguese and Russian
Resolution	<b>300 DPI</b>
Counters	Can be set in Series No, Carton No, Pallet No, etc
Printable heights (mm)	1~12.7mm
Printing speed	<b>The roller can be change freely ,the printing distance can be adjusted</b>
Conveyor speed	Can be set, auto-calculated or use external synchronizer
Barcode	UPCA, UPCE, EAN13, EAN8, INT25, CODE39, CODE128, EAN128, PDF417, DATAMATRIX, QR
Date format	Production date, expiry date with several formats for option
Screen	5inch 800*480 resolution color LCD touch screen
Port	1) Ethernet: support PC software communication protocol SDK. 2) USB2.0: Support U-Disk 3) DB15: For external devices like photocell, synchronizer or alarm kit.
Ink management	Identify ink type automatically and use the best printing parameters Original HP ink cartridge guaranteed Automatic measuring system for ink consumption
Installation	Standard side printing, down printing bracket and anti-shock bracket, users can install according to their needs
Power Supply	AC 100V-240V/50-60HZ, 30W (Dedicated AC adaptor)
Certificate	CE, FCC



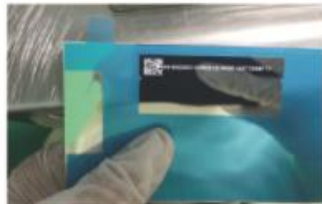


<b>11L</b>	<b>11L-370cc Black ink cartridge</b>
<b>11S</b>	<b>11S-42cc Black ink cartridge</b>
<b>11SR</b>	<b>11SR-42cc Red ink cartridge</b>
<b>11SB</b>	<b>11SB-42cc Blue ink cartridge</b>
<b>12SG</b>	<b>12SG-42cc Green ink cartridge</b>
<b>22S</b>	<b>22S-42cc Black ink cartridge</b>
<b>26S</b>	<b>26S-42cc plus Black ink cartridge</b>
<b>26L</b>	<b>26L-48cc plus Black ink cartridge</b>
<b>41SB</b>	<b>41SB- Blue water-based invisible ink</b>
<b>41SR</b>	<b>41SR-Red water-based invisible ink</b>
<b>42SR</b>	<b>42SR-Red quick-drying invisible ink</b>
<b>53SW/53SY</b>	<b>53SW-White ink/53SY-Yellow ink</b>
<b>52SR</b>	<b>52S-42cc Quick-drying red ink cartridge</b>
<b>52SB</b>	<b>52S-42cc Quick-drying blue ink cartridge</b>



Ink Color

Product display



Product display



# Cover Industry



**Electron Industry**



**Plank& building Industry**



**Chemical Industry**



**Case sealer**



**Paging machine**



**Capper**



**Inner-pack Industry**



**Cosmetics Industry**



**Medicine Industry**



**Labeller**



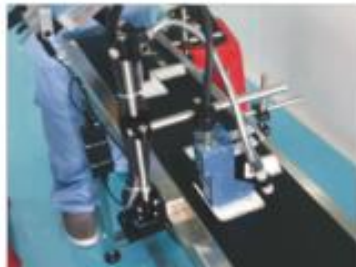
**Auto laminating machine**



**Filling machine**



**Outer-pack Industry**



**Seed Industry**



**Other Industry**



**Die-cutter machine**



**Electronic component automation machine**



**Slitting machine**

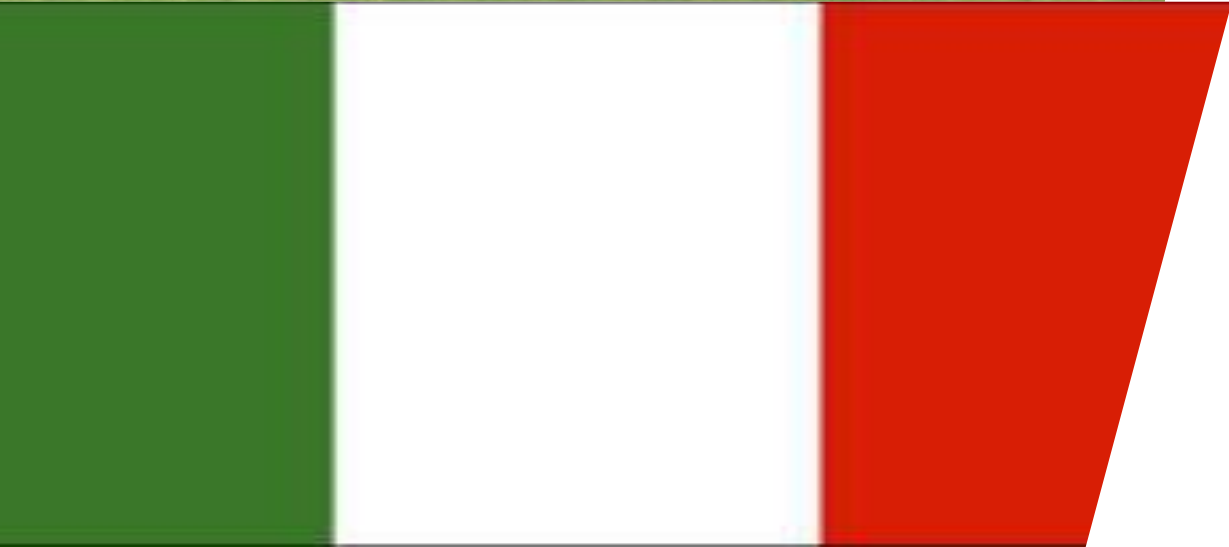
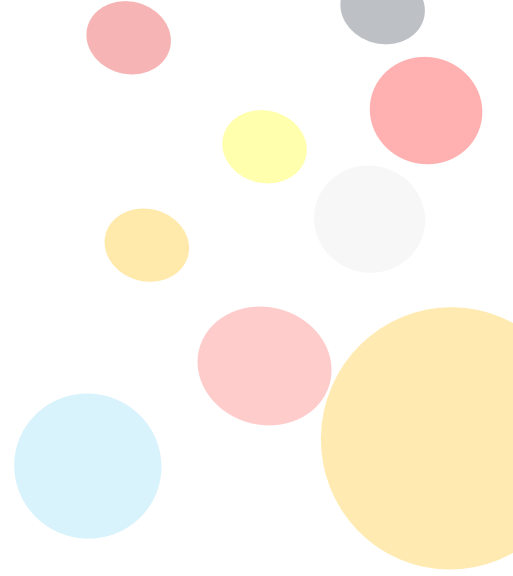




# *Alpha pack-Germany*



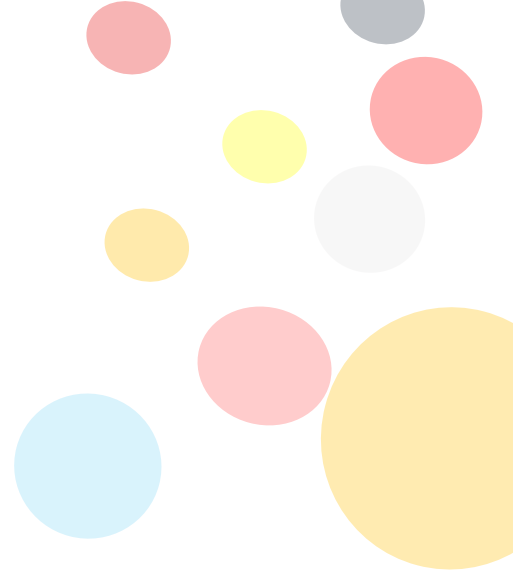


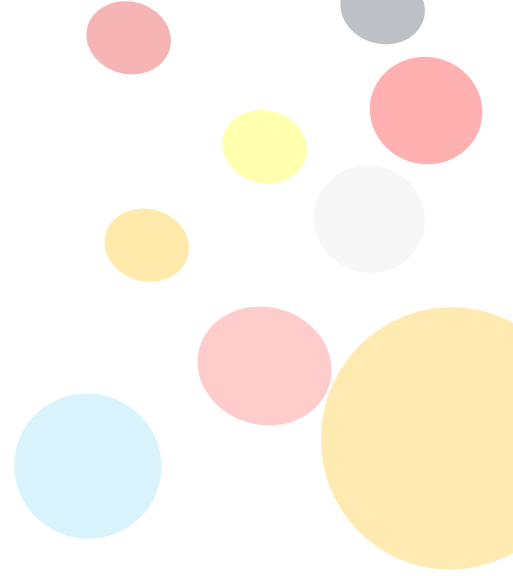


*Alpha Italy*



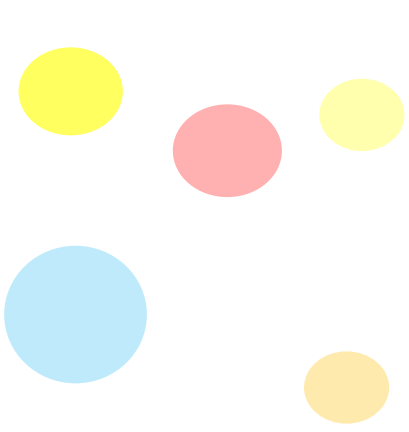
*Alpha USA*





*Alpha Columbia*





***We do better than your  
expectation!!***

smart packaging solutions by manufacturers

