

Alpha-Pack Enterprise Co., Ltd.

Address: Unit 1406, Vanta Industrial
Centre, 21-23 Tai Ling Pai Road, Kwai
Chung, Hong Kong

Tel.: 852-2416-1237

Fax.: 852-2264-6540

E-mail: sale@alpha-pack.com.hk

Website: www.alpha-pack.com.hk



Company Profile

Alpha-Pack Enterprise Limited was established in 1994 in Hong Kong. Alpha-Pack is a comprehensive enterprise that dedicated in packaging machinery in last 20 years; it combines R&D, production, marketing and service together.

Since the company has been founded, Alpha-Pack cooperated with many famous European packaging machinery manufacturers to make the packaging machinery for worldwide market. As the name in Chinese “欧华”, means we made the machine with European standard but in Chinese manufacturing cost. Thanks to the trust from all the business partners, customers and staffs, Alpha-Pack has been grown as one of the biggest packaging machinery manufacturing group in South China, with more than 80,000 m² manufacturing workshops in China and Europe, Alpha-Pack became the leading packaging manufacturer in China for the following categories of packaging machineries:

- Shrink packing machine
- Vertical Form Fill Seal and Flow Wrapper
- Premade pouch filling and sealing machine
- Filling, capping and labeling machine
- Vacuum Machine



LASER CUTTING MACHINE



數控折彎機 CNC BENDING MACHINE



CNC MANUFACTURING CENTER



數控車床 CNC LATHE



車間
machine workshop



給袋機車間
Doypack machine workshop

Corporate Culture

- ◆ All our staffs will, as always, be pursuing a consistent concept that “we do better than you expected” to serve our domestic and worldwide customers.
- ◆ Grateful to customers trust and support, all Alpha-Pack members promise to develop the best products, provide the best service, and create the best brand with a very reasonable price. Create value and profit for our clients.
- ◆ We believe integrity and quality service are the best way to build up long term customer relationship.

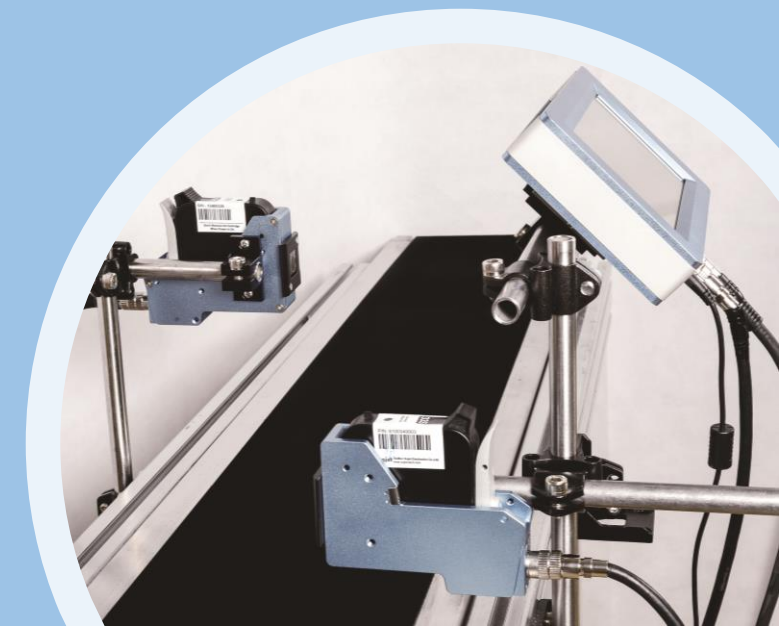


Alpha-Jet Coding Machine

AP-E2

Parameters

Specification	Controller: 210*135*37mm (H*W*D) / 8.3*5.3*1.46 inch Printhead: 126*100*31mm (H*W*D) / 4.9*3.9*1.2 inch
Language	Chinese, English, Japanese, French, German, Spanish, Portuguese and Russian
Resolution	50~600DPI
Counters	Can be set in Series No, Carton No, Pallet No, etc
Printable heights (mm)	1~25.4mm
Printing speed	0-60 m/min (300 DPI) 0-30 m/min(600 DPI)
Conveyor speed	Can be set, auto-calculated or use external synchronizer
Barcode	UPCA, UPCE, EAN13, EAN8, INT25, CODE39, CODE128, EAN128, PDF417, DATAMATRIX, QR
Date format	Production date, expiry date with several formats for option
User management	3 level operating authorization (operator, technician, administrator)
Database	PC software supports MS Excel, MS Access, SQL2000, SQL2005, SQL2008 etc. database formats
Data Source	Standard RS-232 and ethernet port, easy for integration
Screen	1) 7 inch 800*480 resolution color LCD touch screen 2) Brand new operation interface, easy to learn and operate 3) Printer can work independently without PC software
Port	1) Ethernet: support PC software communication protocol SDK. 2) USB2.0: Support U-Disk 3) DB15: For external devices like photocell, synchronizer or alarm kit
Ink management	Identify ink type automatically and use the best printing parameters Original HP ink cartridge guaranteed Automatic measuring system for ink consumption
Installation	Standard side printing, down printing bracket and anti-shock bracket, users can install according to their needs; spring mechanism is optional
Power Input	AC 100V-240V/50-60HZ, 90W (Dedicated AC adaptor)
Certificate	CE, FCC



Ink Cartridge

Quick dry ink cartridges



MODEL	COLOR
52S+	●
51S	●
53S+	●
52SR	●
52SB	●
53SY	●
53SW	○

MODEL	COLOR
11S+	●
21S	●
22S	●
26S	●
11SR	●
11SB	●
12SG+	●

Water-based cartridges



11L
(Large ink bag)



26L
(Large ink bag)

Suitable for various bar codes

Suitable for printing all kinds of one-dimensional code and two-dimensional code

Longer shelf life

Using mild solvents, the nozzle has high corrosion resistance and a long shelf life

More color options

Add blue and red to the original black

Wide range of applications

Can be widely used in medicine, food, electronics, plastics, suitable for various non-absorbent materials, such as aluminum foil, PVC, PE metal, circuit boards, etc.

1. Series ink

Performance characteristics: It can be clearly printed on most uncoated media, has good anti-fading and waterproof performance, and excellent barcode readability.

2. Series ink

It can be printed on partially coated media. It has short drying time and good durability. It has a thicker black printing effect than Series 1 ink.
Applicable materials: coated paper, white cardboard, uncoated media and other semi-absorbent materials.

Egg ink

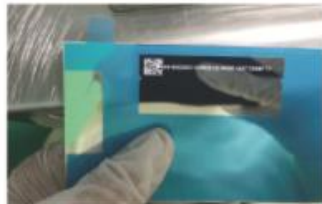
Performance characteristics: Food grade ink, passed FDA test standard.
Applicable material: eggs

11L	11L-370cc Black ink cartridge
11S	11S-42cc Black ink cartridge
11SR	11SR-42cc Red ink cartridge
11SB	11SB-42cc Blue ink cartridge
12SG	12SG-42cc Green ink cartridge
22S	22S-42cc Black ink cartridge
26S	26S-42cc plus Black ink cartridge
26L	26L-48cc plus Black ink cartridge
41SB	41SB- Blue water-based invisible ink
41SR	41SR-Red water-based invisible ink
42SR	42SR-Red quick-drying invisible ink
53SW/53SY	53SW-White ink/53SY-Yellow ink
52SR	52S-42cc Quick-drying red ink cartridge
52SB	52S-42cc Quick-drying blue ink cartridge



Ink Color

Product display



Product display



Cover Industry



Electron Industry



Plank& building Industry



Chemical Industry



Case sealer



Paging machine



Capper



Inner-pack Industry



Cosmetics Industry



Medicine Industry



Labeller



Auto laminating machine



Filling machine



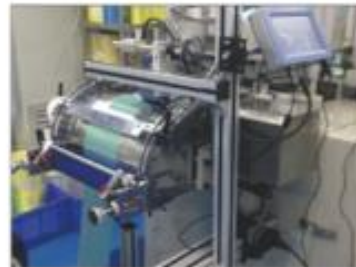
Outer-pack Industry



Seed Industry



Other Industry



Die-cutter machine



Electronic component automation machine

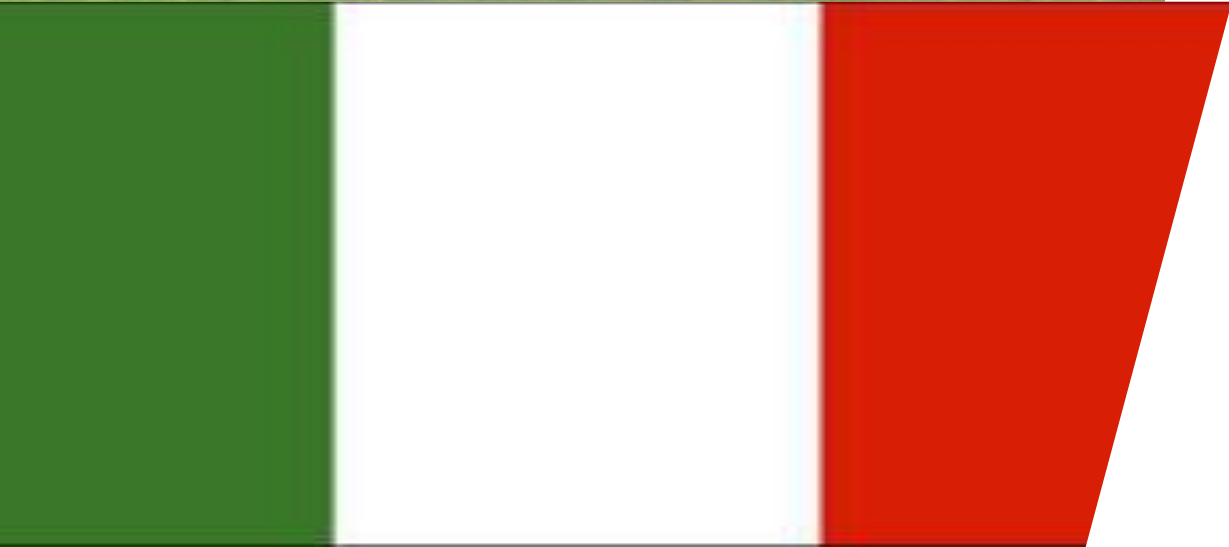
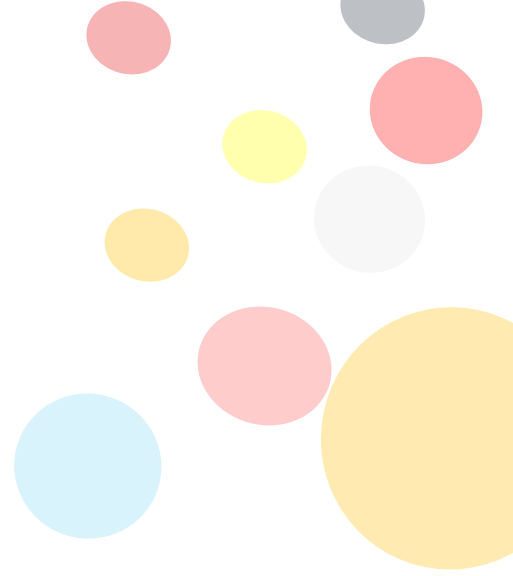


Slitting machine



Alpha pack-Germany

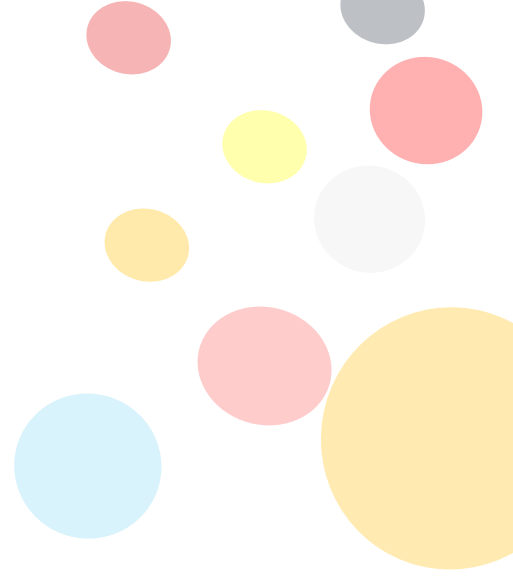


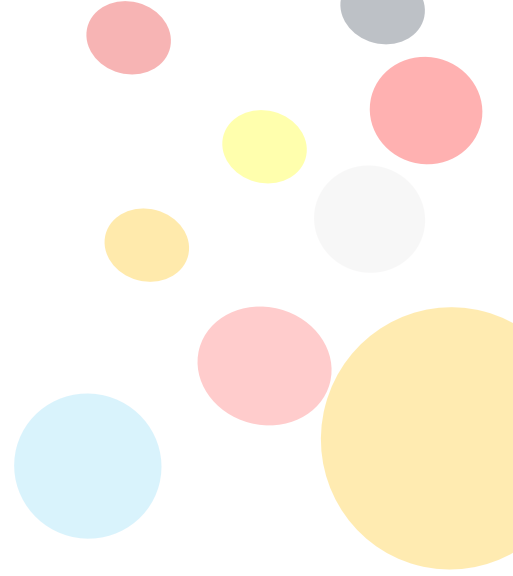


Alpha Italy

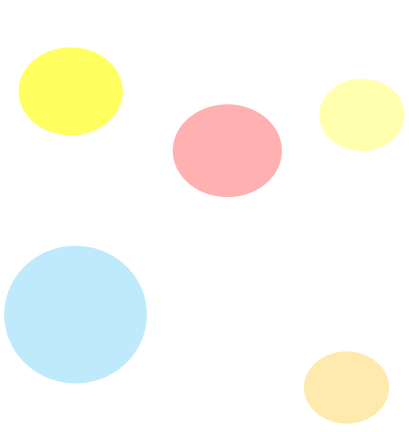


Alpha USA





Alpha Columbia



***We do better than your
expectation!!***

smart packaging solutions by manufacturers

